

NEL CUORE DELLA CITTÀ STA NASCENDO QUALCOSA DI NUOVO

BLOCKS



EMIL
CERAMICA

THE EXTRA FANT
BEYOND THIS POINT

STILE SENZA TEMPO



BROADWAY



BROOKLYN



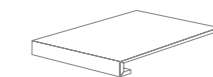
METROPOLITAN



QUEENS



MANHATTAN



GRADONE RETT.
30x30x4,5x3,5
(11^{13/16}"x11^{13/16}"x1^{3/4}"x1^{3/8}")

- 30350RG BROADWAY ● 60
- 30351RG BROOKLYN ● 60
- 30356RG METROPOLITAN ● 60
- 30358RG QUEENS ● 60
- 30359RG MANHATTAN ● 60



GRADONE ANGOLARE RETT.
30x30x4,5x3,5
(11^{13/16}"x11^{13/16}"x1^{3/4}"x1^{3/8}")

- 30350RA BROADWAY ● 781
- 30351RA BROOKLYN ● 781
- 30356RA METROPOLITAN ● 781
- 30358RA QUEENS ● 781
- 30359RA MANHATTAN ● 781



BATTISCOPA RETT.
7,5x60
(2^{15/16}"x23^{5/8}"")

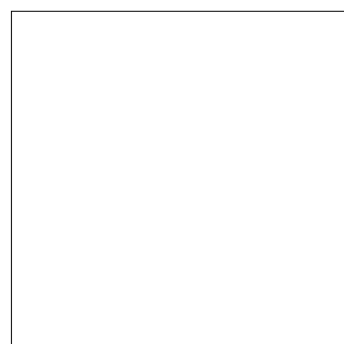
- 87350R BROADWAY ● 13
- 87351R BROOKLYN ● 13
- 87356R METROPOLITAN ● 13
- 87358R QUEENS ● 13
- 87359R MANHATTAN ● 13



BATTISCOPA RETT.
9x45
(3^{9/16}"x17^{11/16}"")

- 84350 BROADWAY ● 10
- 84351 BROOKLYN ● 10
- 84356 METROPOLITAN ● 10
- 84358 QUEENS ● 10
- 84359 MANHATTAN ● 10

Formati—Sizes/Formats/Formate/Tamaños/Форматы



- 60x60 (23^{5/8}"x23^{5/8}"") Naturale Rett.
- 60350R Broadway U₃₅P₃E₃C₂ ● 662
 - 60351R Brooklyn U₃₅P₃E₃C₂ ● 662
 - 60356R Metropolitan ● 662
 - 60358R Queens ● 662
 - 60359R Manhattan ● 662



- 30x60 (11^{13/16}"x23^{5/8}"") Naturale Rett.
- 63350R Broadway U₃₅P₃E₃C₂ ● 61
 - 63351R Brooklyn U₃₅P₃E₃C₂ ● 61
 - 63356R Metropolitan ● 61
 - 63358R Queens ● 61
 - 63359R Manhattan ● 61



- 45x45 (17^{11/16}"x17^{11/16}"") Naturale
- 45350 Broadway U₃₅P₃E₃C₂ ● 54
 - 45351 Brooklyn U₃₅P₃E₃C₂ ● 54
 - 45356 Metropolitan ● 54
 - 45358 Queens ● 54
 - 45359 Manhattan ● 54

- 30x60 (11^{13/16}"x23^{5/8}"") Antiscivolo Rett.
- 63351RZ Brooklyn ● 63
 - 63358RZ Queens ● 63
 - 63359RZ Manhattan ● 63

Si consiglia la posa con fuga 2 mm - laying with a 2 mm-joint is recommended

BACCHETTA

- 1x60 (3^{7/8}"x23^{5/8}"")
L9830 Alluminio lucido ● 57

- 1x60 (3^{7/8}"x23^{5/8}"")
L9831 Alluminio satinato ● 57

LISTELLI SFALSATI*



- 30x60 (11^{13/16}"x23^{5/8}"")
M63350R Broadway Naturale ● 87



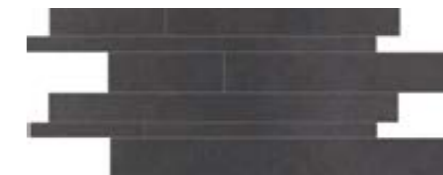
- 30x60 (11^{13/16}"x23^{5/8}"")
M63351R Brooklyn Naturale ● 87



- 30x60 (11^{13/16}"x23^{5/8}"")
M63356R Metropolitan Naturale ● 87



- 30x60 (11^{13/16}"x23^{5/8}"")
M63358R Queens Naturale ● 87



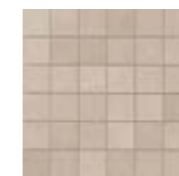
- 30x60 (11^{13/16}"x23^{5/8}"")
M63359R Manhattan Naturale ● 87

MOSAICO TOZZETTI MIX NAT/LAPP*

Tessera 4,8x4,8 - Chip (1^{7/8}"x1^{7/8}"")



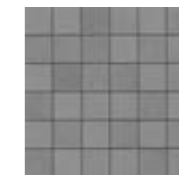
- 30x30 (11^{13/16}"x11^{13/16}"")
I30350 Broadway Nat./Lapp. ● 98



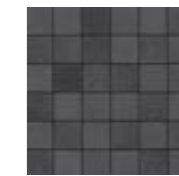
- 30x30 (11^{13/16}"x11^{13/16}"")
I30351 Brooklyn Nat./Lapp. ● 98



- 30x30 (11^{13/16}"x11^{13/16}"")
I30356 Metropolitan Nat./Lapp. ● 98



- 30x30 (11^{13/16}"x11^{13/16}"")
I30358 Queens Nat./Lapp. ● 98



- 30x30 (11^{13/16}"x11^{13/16}"")
I30359 Manhattan Nat./Lapp. ● 98

* su rete_mesh-mounted_sur trame_auf netz geklebt_sobre red_на сетке

Dry - Pressed Ceramic Tiles ISO 13006 : 2012 Annex G - UNI EN 14411 : 2012 Annex G - Bla GL

| CARATTERISTICHE TECNICHE Technical Features - Características Técnicas Technische Eigenschaften - Características Técnicas Технические Характеристики | | NORMA Standard Norme - Norm Norma - Norma | VALORI Value - Valeur Vorgabe - Valor Средние |
|--|---|--|--|
| | PLANARITÀ Flatness - Planéité - Ebenflächigkeit - Planiyud - Плоскостность | UNI EN ISO 10545/2 | ± 0,26% / ± 1,5mm |
| | | ASTM C485 Warpage Calibrated ± 0,75% (max ± 0,09 in) Rectified ± 0,40% (max ± 0,05 in-size ≤ 60cm) (max ± 0,07 in-size > 60cm) | - ± 0,25% (max ± 0,05 in-size ≤ 60cm) (max ± 0,07 in-size > 60cm) |
| | ASSORBIMENTO D'ACQUA - Valore medio in % Water absorption - Average value expressed in % - Absorption d'eau - Valeur moyenne en % Wasseraufnahme - Durchschnittswert in % - Absorción de agua - Valor medio en % Поглощение воды | UNI EN ISO 10545/3 ASTM C373 | Conforme Compliant |
| | RESISTENZA ALLA FLESSIONE Modulus of rupture - Resistance a la flexion - Biegefestigkeit - Resistencia a la flexion Прочность на изгиб | UNI EN ISO 10545/4 | ≥ 50 N/mm ² |
| | FORZA DI ROTTURA Breaking strength - Résistance à la rupture - Bruchlast - Resistencia a la rotura Разрывное усилие | UNI EN ISO 10545/4 ASTM C648 | ≥ 2000 N 700 LBS |
| | RESISTENZA AL GELO Frost resistance - Résistance au gel - Frostbeständigkeit - Resistencia a las heladas Морозостойкость | UNI EN ISO 10545/12 ASTM C1026 | Conforme Unaffected |
| | RESISTENZA CHIMICA ad alte e basse concentrazioni di acidi e basi Chemical resistance to high and low acid and basic concentrations Résistance chimique aux hautes et basses concentrations d'acides et de bases Chemikalienfestigkeit bei hohen und niedrigen Konzentrationen von Säuren und Basen Resistencia química con concentraciones altas y bajas de ácidos y bases Химическая стойкость к высоким и низким концентрациям кислот и щелочей | UNI EN ISO 10545/13 ASTM C-650 | GA - GLA - GHA Unaffected |
| | RESISTENZA ALLE MACCHIE Stain resistance - Résistance aux taches Fleckenbeständigkeit - Resistencia a las manchas - Стойкость к образованию пятен | UNI EN ISO 10545/14 CTI 81-7D | 5 No Evident Variation |
| | COEFFICIENTE DI ATTRITO Slip resistance - Coefficient de glissement - Rutschfestigkeit Barfußbereich Coeficiente de atrito medio - Коэффициент трения | DIN 51130 DIN 51097 ANSI A 137.1 - 2012 DCOF (Section 9.6) B.C.R.A. | R10 B (A+B) Dry: 0,68* / Wet: 0,54* ≥ 0,40 |

* Values obtained with certificate n° 20120018. Date 12/17/2012.

PER MAGGIORI CHIARIMENTI SUI DATI TECNICI E SULLA GARANZIA CONSULTARE IL CATALOGO GENERALE IN VIGORE. For further information on technical specifications, please consult our up-dated general catalogue. Pour toutes informations supplémentaires sur les données techniques et sur les garanties, veuillez consulter le catalogue général en vigueur. Für weitere Informationen über technische Daten und Garantie beziehen sie sich bitte auf den aktuellen Gesamtkatalog. Para ulteriores informaciones sobre los datos técnicos y la garantía, vease el catalogo general en vigor. Более подробную информацию о технических данных и гарантии смотрите в действующем сводном катал.

SHADE VARIATION

V1 Low

IMBALLI E PESI

PACKING AND WEIGHT - EMBALLAGES ET POIDS - VERPACKUNG UND GEWICHT - EMBALAJES Y PESOS - УПАКОВКА И ВЕС

| Articolo Item Reference Artikel Artículo Артикула | Formato Size Format Format Тamaño Формат cm. | Spessore Thickness Epaisseur Stärke Espesor Толщина mm. | Pz. xMq. Pieces xSqm Pcs xM ² Stk. xQm Pzs xMc. Шт. x Кв.М. | Pz. x Scat. Pieces x Box Pcs / Bte Stk. x Krt. Pzs x Caja Шт. x Кор. | Mq. x Scat. Sqm x Box M ² / Bte Qm x Krt. Mc. x Caja Кв.М. x Кор. | Peso x Scat. Weight x Box Poids / Bte Gewicht x Krt Peso x Caja Вес x Кор. kg | Scat. x Pal. Boxes x Pal. Bte / Pal. Krt. x Pal. Cajas x Pal. Кор. x Подд. | Mq. x Pal. Sqm x Pal. M ² / Pal. Qm x Pal. Mc. x Pal. Кв.М x Подд. | Peso x Pal. Weight x Pal. Poids / Pal. Gewicht x Pal. Peso x Pal. Вес x Подд. kg |
|--|--|---|---|---|---|---|---|--|--|
| 6035_R | 60x60 | 10,5 | 2,78 | 3 | 1,080 | 25,00 | 36 | 38,88 | 900 |
| 6335_R | 30x60 | 10,5 | 5,56 | 6 | 1,080 | 25,00 | 40 | 43,20 | 1000 |
| 6335_RZ | 30x60 | 10,5 | 5,56 | 6 | 1,080 | 25,00 | 40 | 43,20 | 1000 |
| 4535_ | 45x45 | 9,0 | 4,94 | 6 | 1,215 | 25,00 | 33 | 40,10 | 825 |
| M6335_R | 30x60 | 10,5 | 5,56 | 4 | 0,720 | 16,00 | 30 | 21,60 | 480 |
| I3035_ | 30x30 | 10,5 | 11,11 | 5 | 0,450 | 10,00 | - | - | - |

Emilceramica S.p.A.



EMIL CERAMICA
STILE SENZA TEMPO

EMILCERAMICA S.p.A.
Via Ghiarola Nuova 29
41042 Fiorano Modenese (Mo) - Italy
Tel. +39 0536 835111
Italy fax: +39 0536 835958
Export fax: +39 0536 835490
www.emilceramica.it